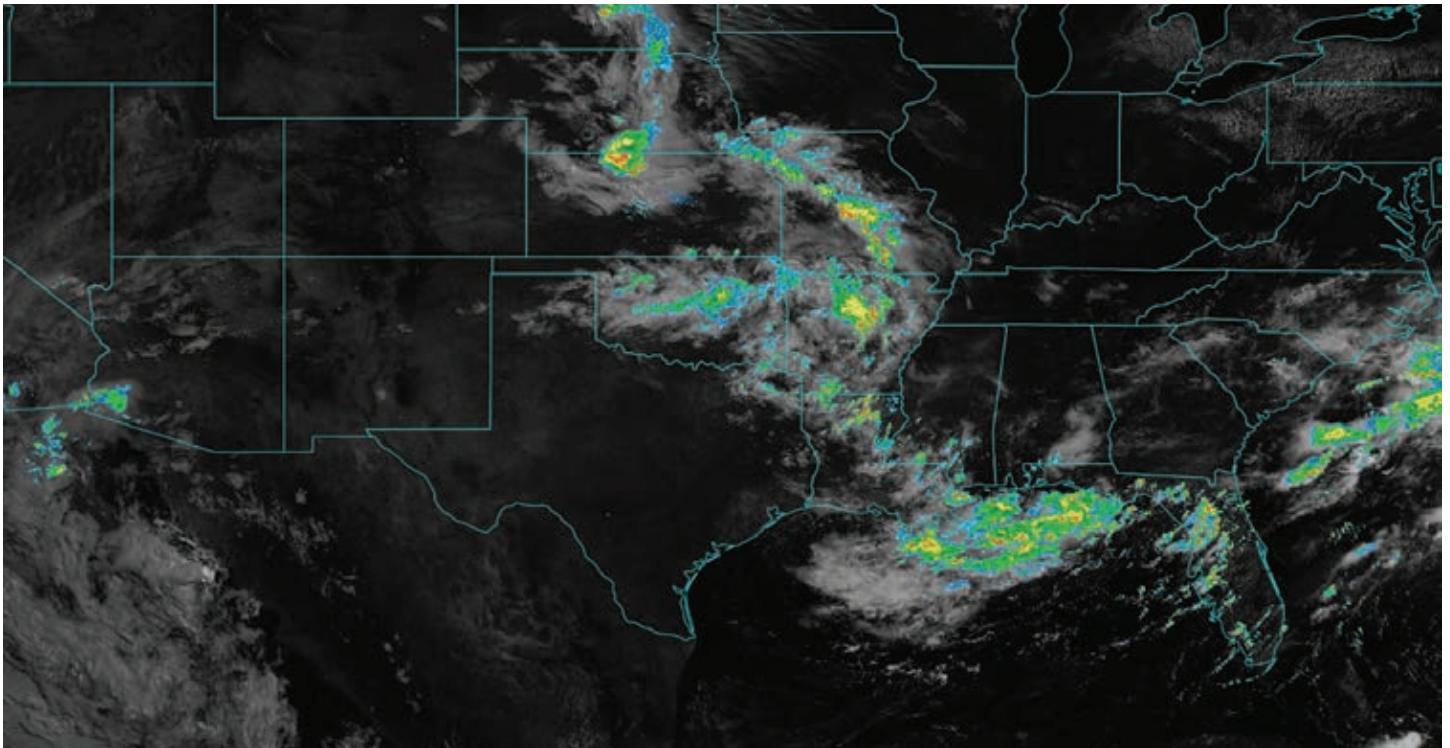
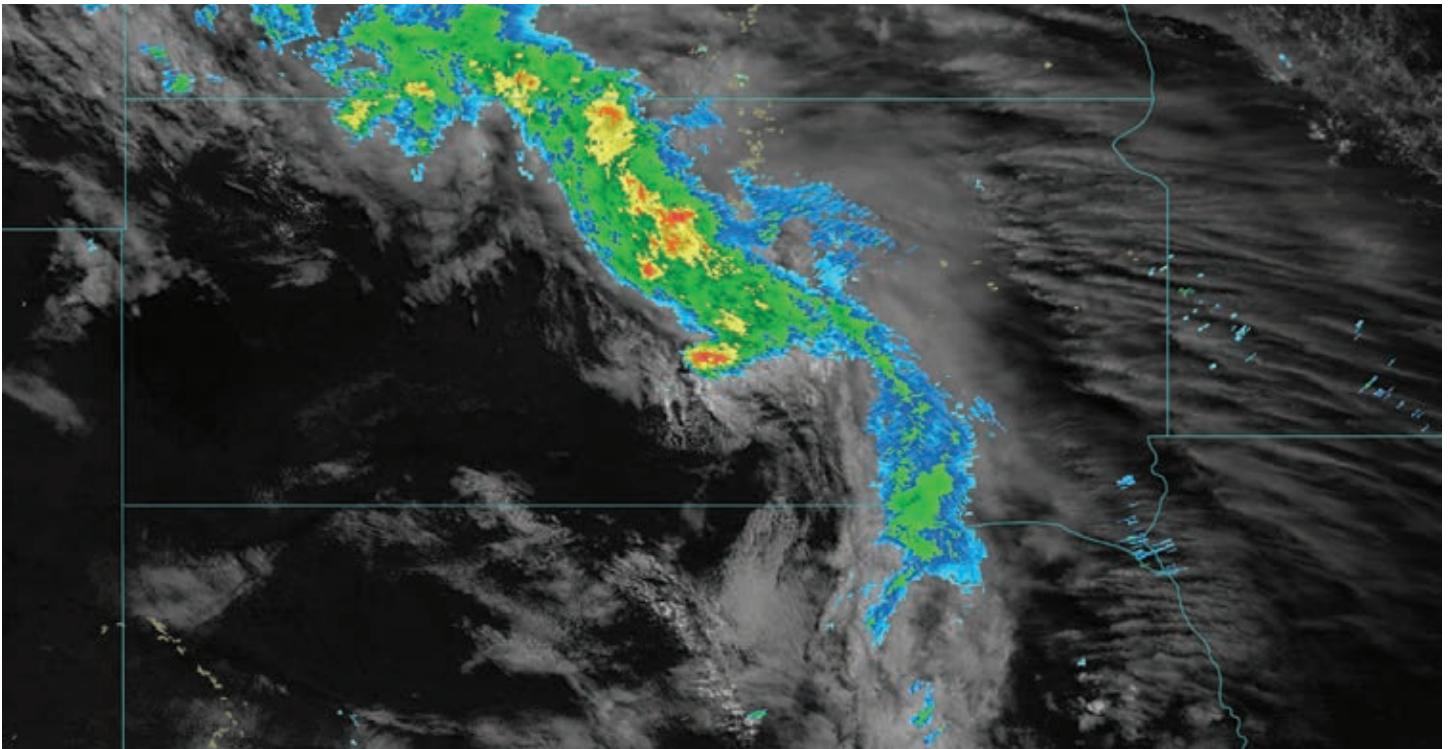


Geostationary Satellite Data



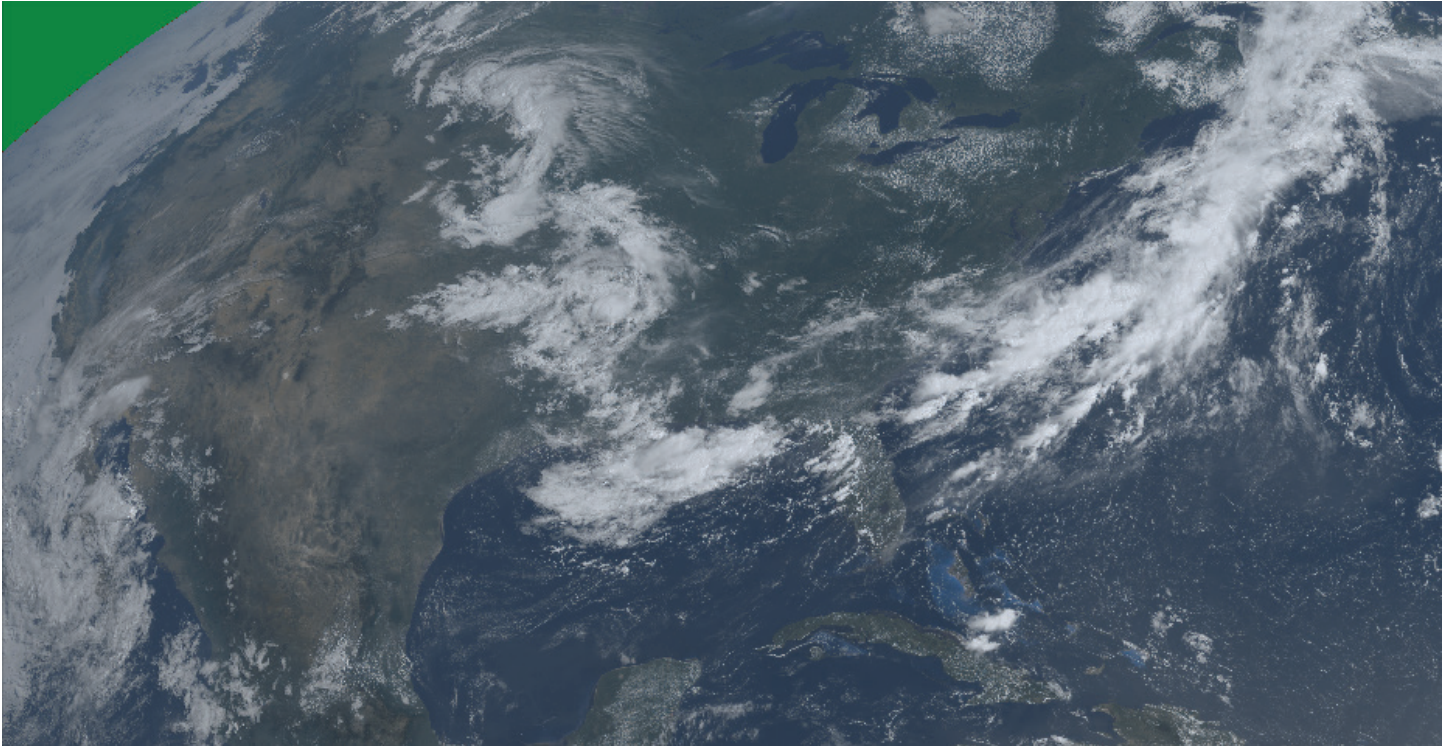
GOES-16 Weather Satellite with Radar Overlay

GOES East Visible with 256 Level Radar Mosaic Overlay Continental US Wide View. GOES East product data is from the Unisys Direct feed. This is one of 16 bands.



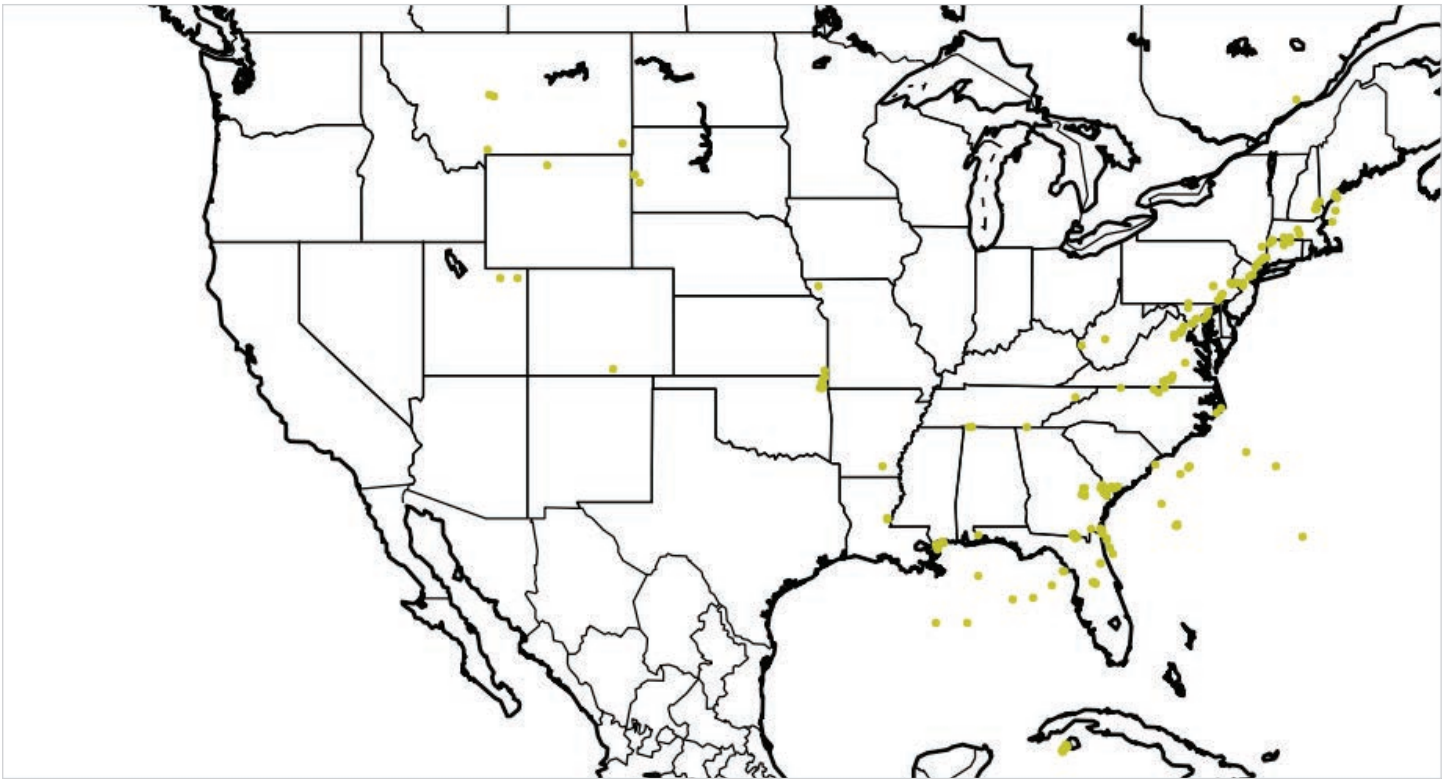
GOES 16 Weather Satellite with Radar Overlay

GOES East Visible with 256 Level Radar Mosaic Overlay Central US Zoomed View



GOES 16 Weather Satellite Full Color Image

GOES East full color presentation by combining multiple bands.



GOES 16 Global Lightning Data

GOES-16 Global Lightning Mapper (GLM) data available from Unisys displayed in a CONUS view. Recent lightning strikes detected by GOES-16 are shown by yellow dots.

The future of weather technology is now.

Contact us today at weather@unisys.com or visit weather.unisys.com for more information.

For more information visit www.unisys.com

© 2018 Unisys Corporation. All rights reserved.

Unisys and other Unisys product and service names mentioned herein, as well as their respective logos, are trademarks or registered trademarks of Unisys Corporation. All other trademarks referenced herein are the property of their respective owners.